

### Key Features

- MFP Technology (Mechanical Filter with Photocell)
- 1/3" LXR CCD for excellent IR sensitivity, low smear, low streak and excellent anti-blooming characteristics
- Photocell-controlled switching between day and night
- Dual window (IR-Cut and IR-Pass) mechanical filter for optimized 24/7 performance
- Zero focus shift from color to IR modes
- Exceptional daytime color, outstanding night-time IR
- Integrated Day-Night (IDN™) design with 18 LEDs at 840nm for zero lux effectiveness
- Optimised LED Array for 40 feet of evenly-distributed active infrared Night Vision
- 12 VCD / 24 VAC operation, VRB power protected
- Separate, dedicated VRBs for CCD and IR Array ensures increased operational stability
- Cast & extruded aluminum
- Easy access for lens adjustments
- Varifocal 4-8mm auto-iris lens
- All-Weather sealed for extreme environments

### Product Description

The EX27MNX.4 is an all-weather day/night camera that incorporates MFP Technology for exceptional day/night performance. Using mechanical filter technology, the EX27MNX.4 delivers brilliant color during the day and outstanding IR sensitivity at night.

The EX27MNX.4 uses Extreme's proprietary LXR CCD technology for outstanding spectral response in both visible and near infrared regions. The high-resolution sensor produces an amazing 570 TVL in monochrome and 450 TVL in color. As with all LXR-type sensors, the video signal is characterized by low-smear, low-streak and excellent anti-blooming characteristics.

An IR-Cut filter eliminates IR bleed during the day to ensure accurate color video. At night, a photocell-controlled IR-Pass filter optimises Night Vision performance. Together with a high-efficiency 18-LED infrared, the EX27MNX.4 delivers 40 feet of evenly-distributed Night Vision.

The EX27MNX.4 features an all-weather housing field-proven for successful application in extreme environments. The cast and extruded aluminum housing accommodates a 4-8mm varifocal, auto-iris lens for extra installation versatility.

Rugged, compact, power protected and extreme weather-sealed, the EX27MNX.4 is an ideal day/night camera for a wide variety of technical surveillance applications.

### Product Image



### Applications

- Commercial security
- Critical infrastructure
- Homeland security
- Public area surveillance
- Industrial sites
- Ports and harbors
- Schools, colleges and universities
- Outdoor surveillance
- Airports
- Extreme weather environments



Conventional dual mode color / IR camera: Video taken without MFP technology suffers from IR bleed and poor quality color.



MFP Technology: The same scene shows excellent color performance under Extreme's mechanical filter technology.

### Specifications

(Other Special Order Models available on request)

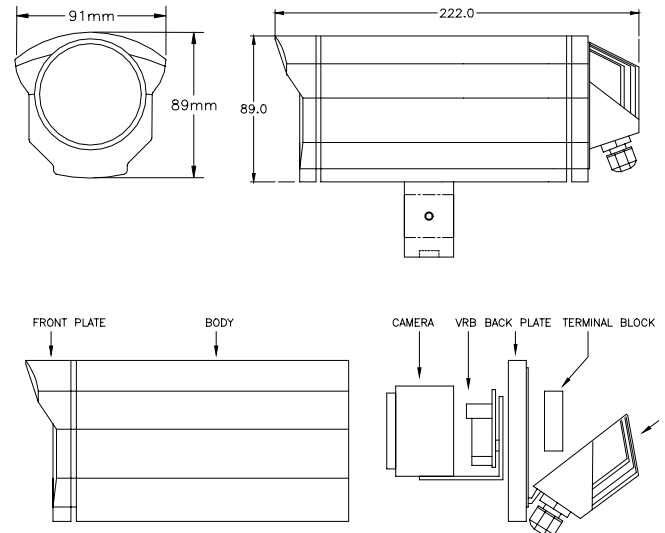
<b>CCD Camera</b>	MX400 (with MFP Technology)
<b>Image Sensor</b>	1/3" LXR Interline CCD
<b>Filter</b>	Dual-window mechanical type
<b>Day-Night Switching</b>	Photocell-controlled, automatic
<b>LED Type</b>	High-efficiency 850nm, even distribution IR
<b>Number of LEDs</b>	18
<b>Lens</b>	Varifocal 4-8mm, auto-iris
<b>Effective Pixels</b>	NTSC: 765 (H) x 494 (V) PAL: 752 (H) x 582 (V)
<b>Resolution</b>	450 lines color imaging 570 lines B/W imaging
<b>Scanning System</b>	525 lines interlaced (NTSC) 625 lines interlaced (PAL)
<b>Output Signal</b>	Standard composite signal 1Vpp composite video into 75 Ohms
<b>Sensitivity - 30 IRE</b>	0.2 Lux with F2.0 lens 0.0 Lux with infrared on
<b>Electronics Iris</b>	1/60 ~ 1/100,000 (NTSC) 1/50 ~ 1/100,000 (PAL)
<b>S/N Ratio</b>	Greater than 46dB (AGC off)
<b>Gamma</b>	0.45
<b>AGC</b>	On
<b>Consumption</b>	4.5W or less
<b>Voltage</b>	12 VDC or 24 VAC
<b>Power Draw</b>	540 mA @ 12 VDC, 6.5 W (max)
<b>Construction</b>	Robust aluminum castina / extrusion
<b>Weight</b>	3.1 lbs (1.4 kg)
<b>Color</b>	Black (other colors by special order)
<b>Mount</b>	Double U-Mount Supplied with 1/4-20
<b>Environmental</b>	IP66, NEMA 4 compliant
<b>Temperature</b>	-50°C to 50°C (-58°F to 122°F)
<b>Wall Bracket</b>	EXMB.023 (order separately)
<b>Sunhood</b>	EXSH.27 (order separately)

Note: Environments -50°C and below require cold-crack cabling.

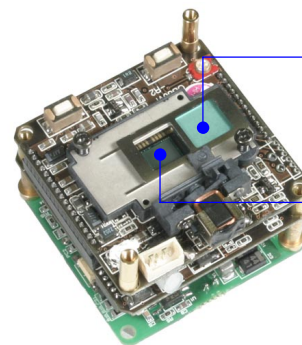
### Certifications / Compliance

CSA Type 4X	Outdoor Weather Rating
CSA C22.2	General Electrical Requirements
UL Std No 50	Enclosures for Electrical Equipment
UL Std No 2044	Commercial CCTV Equipment

### Technical Drawings



### MFP Technology



**Day:** IR-cut filter delivers accurate daytime color by filtering IR light

**Night:** IR-pass filter, photocell-controlled, allows optimal performance in dark

### Part Number

#### EX27MNX.4-VA408

1/3" LXR CCD, color / mono  
 High-efficiency 18 LED Array, 850nm  
 Photocell-controlled mechanical filter (MFP)  
 Varifocal 4-8mm auto-iris  
 All-weather housing, aluminum

Specifications are subject to change without notice  
 Patent Pending - © Extreme CCTV Inc. 2005

EX27MNX.4-VA408\_TS\_050118.doc

Dealer/Distributor



UK / Europe  
 USA / Canada  
 Toll Free (NA)

Tel: + 44 (0) 1670 730 187  
 Fax: + 44 (0) 1670 730 188  
 Tel: + 1 604 420 7711  
 Fax: + 1 604 420 3300  
 Tel: + 1 888 409 2288  
[www.ExtremeCCTV.com](http://www.ExtremeCCTV.com)