

## ADDENDUM

This documents contains the instructions for additional features and corrections/additions to the Operating Instructions. Refer to the following tables for the corresponding pages and descriptions. (For some of the incorrect parts and the respective corrections, ***Bold Italic*** characters are used to highlight the corresponding parts.)

### INSTRUCTIONS FOR ADDITIONAL FEATURES

#### Using a SD Card or a USB Hard Disk Drive as an External Recording Device

It is possible to use a SD card or an external hard disk drive (with USB interface) as an external recording device. To use a SD card, connect the following SD card reader/writer to the unit.

Model	Manufacturer/Part No.
SD card reader/writer with USB interface	Mfr.: PNY TECHNOLOGIES Part #: P-SDMC-USB2-PB
External HDD with USB interface	Mfr.: MAXTOR Part #: A01A250  Mfr.: Western Digital Part #: WDXC2500

#### Notes:

- The maximum number of files that can be copied on an external device differs depending on a medium as follows:

CD-R: 30 000  
 DVD-R: 30 000  
 DVD-RAM: 30 000  
 External HDD: 16 384  
 SD card: 16 384

When a total number of copied files reach the maximum number above, copying will be performed differently depending on the "Disk End Mode" setting as follows:

When "STOP" is selected: Copying will stop.

When "CONTINUE" is selected: Copying will be continued. (The older files will be overwritten by the newer files. In this case, the oldest file is the first to be overwritten.)

- Do not create a folder/file on an external recording device using a PC.

#### Recording Period Display (HDD)

It is possible to display recording period of recorded images on each hard disk drive.

#### When operating the buttons on the front panel on the unit

- Press the SET button when "Disk Info" of "Maintenance" is displayed.

The HDD capacity indication for "MAIN-1" will be highlighted.

	1	2	3	4
MAIN	<b>160GB</b> 15000h	160GB 15000h		
EXT1	160GB 15000h	160GB 15000h	160GB 15000h	160GB 15000h
EXT2	160GB 15000h	160GB 15000h	160GB 15000h	160GB 15000h
EXT3	160GB 15000h	160GB 15000h	160GB 15000h	160GB 15000h
EXT4	160GB 15000h	160GB 15000h	160GB 15000h	160GB 15000h
EXT5	160GB 15000h	160GB 15000h	160GB 15000h	160GB 15000h
EXT6	160GB 15000h	160GB 15000h	160GB 15000h	160GB 15000h
EXT7	160GB 15000h	160GB 15000h	160GB 15000h	160GB 15000h

- Select a desired disk using the arrows button.

- Press the SET button.

Recording period of recorded images on each recording area of the selected disk will be displayed on the pop-up window.

The "--" indication will be displayed when there is no recorded image on the relevant recording area or when the recording area itself has not been created.

NORMAL	JAN.1.04 8:00:00 AM	JAN.15.05 11:32:20 PM
EVENT	--	
Copy	JAN.12.04 11:20:11 AM	JAN.1.05 1:00:05 PM
PRE REC	--	
CANCEL : [ SETUP/ESC ]		

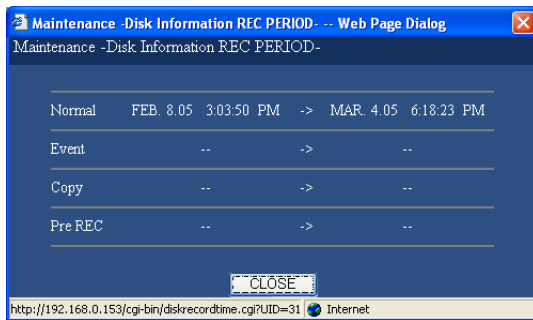
## When using a PC via a network

1. Click the HDD capacity indication when "Disk Information" of "Maintenance" is displayed.

	DISK1	DISK2	DISK3	DISK4
MAIN	71 GB 325 h	71 GB 325 h	-	-
EXT1	** GB ** h	** GB ** h	** GB ** h	** GB ** h
	** GB ** h	** GB ** h	** GB ** h	** GB ** h
EXT2	** GB ** h	** GB ** h	** GB ** h	** GB ** h
	** GB ** h	** GB ** h	** GB ** h	** GB ** h
EXT3	** GB ** h	** GB ** h	** GB ** h	** GB ** h
	** GB ** h	** GB ** h	** GB ** h	** GB ** h
EXT4	** GB ** h	** GB ** h	** GB ** h	** GB ** h
	** GB ** h	** GB ** h	** GB ** h	** GB ** h
EXT5	** GB ** h	** GB ** h	** GB ** h	** GB ** h
	** GB ** h	** GB ** h	** GB ** h	** GB ** h
EXT6	** GB ** h	** GB ** h	** GB ** h	** GB ** h
	** GB ** h	** GB ** h	** GB ** h	** GB ** h
EXT7	** GB ** h	** GB ** h	** GB ** h	** GB ** h
	** GB ** h	** GB ** h	** GB ** h	** GB ** h

2. Recording period of recorded images on each recording area of the selected disk will be displayed on the pop-up window.

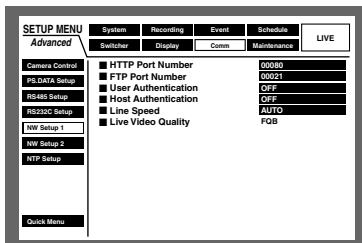
The "--" indication will be displayed when there is no recorded image on the relevant recording area or when the recording area itself has not been created.



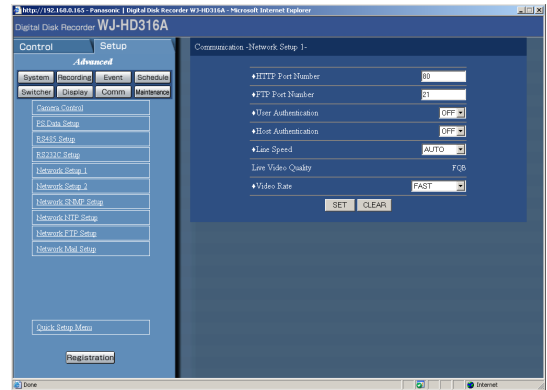
## FTP Port Number Setting

The "FTP Port Number" setting is added to the "NW Setup 1" menu of "Comm" on the SETUP MENU (Advanced) ("Network Setup 1" of "Comm" when using a PC via a network).

It is possible to change the FTP port number to enhance the security.



Available numbers are 1-65535 except the number used as the HTTP port number and the following numbers: 20, 23, 25, 42, 67, 68, 69, 79, 80, 105, 110, 123, 161, 162, 10000, 10001, 10002, 10003, 10004, 10005, 10006, 10007.

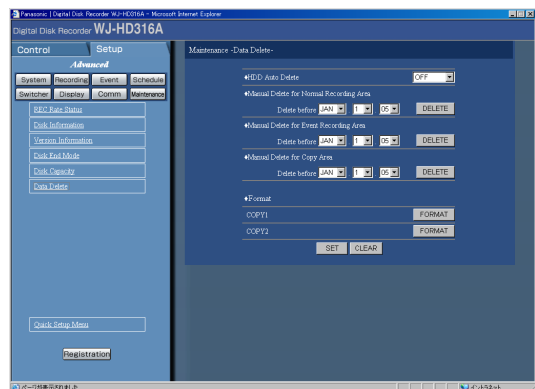
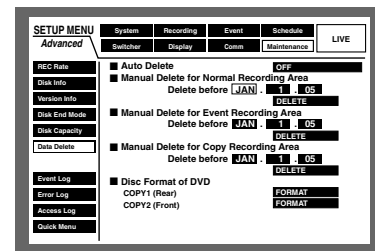


As this feature is added, the following setting parameters and the default setting of "FTP Port Number" should be added between "HTTP Port Number" and "Host Authentication" of "NW Setup 1" on page 170 of the Operating Instructions.

Setup Menu	Setup Item	Parameter	Default Setting	*1
NW Setup 1	FTP Port Number	0 to 65535	21	

## Manual Deletion of Copy Recording Area

The "manual Delete for copy area" setting is added to the "Data Delete" menu of "Maintenance" on the SETUP MENU (Advanced).



By setting the time and date, images in the copy area of the hard disk that were recorded up until a day before the set time and date will be deleted.

## Camera Event Functions

It is possible to automatically activate the camera functions (camera event) such as the auto track function at a designated time and date.

Up to 128 camera events can be registered, and they can be activated daily or weekly on a designated day.

Camera events can be registered on the "Camera Event" menu ("Schedule" - "Camera Event") of the WJ-HD300 Series Administrator Console.

### Important:

The camera event functions are available only when the setup file of the WJ-HD300 series digital disk recorder is 3.xx or later. When the version of the setup file is 1.xx or 2.xx, it is impossible to activate the camera event functions.

### Auto Track Function

1. Click the radio button of "Select Model Number", and then click "V3.xx" for "Select Version" on the new menu.
2. Click "Advanced Setup menu", and then click "Schedule".
3. Click the [Add] button when the "Camera Event" menu is displayed.
4. Click the radio button of "Auto Track". The "Auto Track" menu will be displayed.

#### • When "Use" is selected for "Alarm Input (ALARM IN 1-4)"

All the parameters of "ALARM IN" (ALARM IN 1-4) on the setup menu of the camera will be "AUTOTRACK" (AUTOTRACK 1-4) at the designated start time and will be "OFF" at the designated end time.

When "AUTOTRACK" (AUTOTRACK 1-4) is selected for "ALARM IN" (ALARM IN 1-4), the applied auto track function will start when an alarm output signal is supplied to the respective ALARM IN connector (1-4).

#### • When "Not Use" is selected for "Alarm Input (ALARM IN 1-4)"

The camera will move to the designated preset position at the designated start time, and will be in the standby state of the auto track function.

The standby state will be released at the designated end time.

### Important:

- When controlling the camera during the active period of the auto track function, the auto track function will be stopped. To start the auto track function, open the setup menu of the camera and then close it after controlling the camera.
- When it gets to the start time of the auto track function during controlling the camera manually, the auto track function will start without moving to the preset position.
- When the same camera channels are selected and the auto track function is set differently for two or more camera events, do not set the same start time of the auto track function for each camera event. When two or more

camera events with the same start time of the auto track function are registered, only the latest registered camera event will be activated even though the end time of the auto track function for each camera event is set differently. Try not to set the same start time of the auto track function for two or more camera events.

### BW and Patrol

Click the [Add] button, and then click the radio button of "BW and Patrol".

The "BW and Patrol" menu will be displayed.

#### BW

**ON:** Camera picture will be monochrome picture.

**OFF:** Camera picture will be color picture.

**AUTO:** Camera picture will be switched between monochrome and color depending on the brightness. (Bright: Color, Dark: Monochrome)

#### Patrol (1 (S), 2 (S), 3 (S), 4 (S))

Refer to the operating instructions of the camera for further information about the settings of "Patrol".

Perform the settings for a schedule of the camera event by designating the day of the week and time. Refer to the following table for the settings.

Setup Item	Parameter	Description
Schedule Mode	Daily	Select to activate a camera event daily.
	Mon - Sun	Select to activate a camera event on the designated day of the week (weekly)
Time to Activate	0:00 AM - 11:59 PM	Select to activate a camera event at the designated time (When "Auto Track" is set, it is necessary to set the end time.)
Camera CH	CAM1 - CAM16	Check to select the camera channels (Camera CH) to be used.

### Important:

- The "Auto Track" and "BW and Patrol" functions are available only when the WV-CS954 is connected.
- When the same camera channels are selected and the "BW and Patrol" function is set differently for two or more camera events, do not set the same start time of the "BW and Patrol" function for each camera event. When two or more camera events with the same start time of the "BW and Patrol" function are registered, only the latest registered camera event will be activated even though the end time of the "BW and Patrol" function for each camera event is set differently. Try not to set the same start time of the "BW and Patrol" function for two or more camera events.

## Setting Examples

Mon - Fri	Auto Track	"Use" for "Alarm Input (ALARM IN 1-4)"	"Not Use" for "Alarm Input (ALARM IN 1-4)"	"Use" for "Alarm Input (ALARM IN 1-4)"
	Patrol	BW [ON] - Patrol [PATROL 1 (S)]	BW [OFF] - Patrol [PATROL 1 (S)]	BW [ON] - Patrol [PATROL 1 (S)]
Sat/Sun	Auto Track	"Use" for "Alarm Input (ALARM IN 1-4)"		
	Patrol	BW [ON] - Patrol [PATROL 1 (S)]	BW [OFF] - Patrol [PATROL 1 (S)]	BW [ON] - Patrol [PATROL 1 (S)]

### Business Hours on Monday - Friday (9:00 AM - 5:00 PM):

The auto track function will start from the preset number 15 without using the alarm input (ALARM IN 1-4).

### Outside Business Hours on Monday - Friday (0:00 AM - 9:00 AM, 5:00 PM - 0:00 AM):

The auto track function will start using the alarm input (ALARM IN 1-4).

### Saturday and Sunday:

The auto track function will start using the alarm input (ALARM IN 1-4).

### Daytime (Daily):

"BW and Patrol" shall be set to BW [OFF] - Patrol [PATROL 1 (S)].

### Nighttime (Daily):

"BW and Patrol" shall be set to BW [ON] - Patrol [PATROL 1 (S)].

As this feature is added, the following setting parameters and the default setting of "Camera Event" should be added below "Special Days" of "Schedule" on page 168 of the Operating Instructions.  
(It is possible to perform the settings of "Camera Event" only using the Administrator Console.)

Setup Menu	Setup Item	Parameter	Default Setting	*1	
Schedule	Camera Event	Schedule Mode	Daily/Mon - Sun	Daily	
		Time to Active	0:00 AM to 11:59 PM	--:-- (*Auto Track only) --:-- to --:-- (*BW and Patrol only)	
		Alarm Input (*Auto Track only)	Use/Not Use (0/1/2/.../256)	Use	
		BW (*BW and Patrol only)	ON/OFF/AUTO	ON	
		Patrol (*BW and Patrol only)	PATROL1(S) / PATROL2(S) / PATROL3(S) / PATROL4(S)	PATROL1(S)	

# CORRECTIONS/ADDITIONS TO THE OPERATING INSTRUCTIONS

## Operating Instructions (book)

No.	Page	Part to be added or corrected	Description on the Operating Instructions	Correction
1	15	The status indication to be displayed in the error display area.	-	<b>1DOWN</b> : One of the disks in the running RAID set failed (It is possible to replace/recover the failed disk.)
2	28	Additional notation to the description of the search filter "TEXT".	-	Audio will not be heard when playing a recording event filtered using the search filter "TEXT".
3	32	Additional notation to the description of "Search for copy data (Copy Data Search)"	-	To stop searching during searching, click the [STOP] button.
4	52	Additional notation to the description of "Copying (Duplicate)"	-	In the following cases, copying currently being performed will be canceled: <ul style="list-style-type: none"> <li>• When the settings are changed during copying</li> <li>• When the user who started the manual copying (currently being performed) using a web browser logged out (closed the web browser)</li> </ul>
5	53	The description of "Note" for [3]	<ul style="list-style-type: none"> <li>• Time range to be set for "PERIOD" should be 99 minutes and 59 seconds or less to copy images for one attempt. (Copying will stop automatically when the size of the copied data reaches 4 GB even before the end time of the set time range.)</li> </ul>	<p>There is no time range limitation for copying. However, two or more copied data files may be created for a download since copied data will be segmented in the following cases:</p> <ul style="list-style-type: none"> <li>• When 99 minutes and 59 second's worth of recorded images are copied (maximum recording duration per a file)</li> <li>• When a copied data file size reaches 2 GB (Maximum data size per a file)</li> </ul>
6	61	The indication	-	<b>1DOWN</b>
7	61	The description about the indication " <b>1DOWN</b> "	-	Consult the dealer. After replacing the hard disk, the " <b>1DOWN</b> " error status will be canceled.
8	106	The description of "Important" for "Auto Copy"	<ul style="list-style-type: none"> <li>• Images to be copied automatically will be 30 minute's worth of images recorded from the start of emergency recording/event recording.</li> </ul>	<p>There is no time range limitation for copying. However, two or more copied data files may be created for a download since copied data will be segmented when a copied data file size reaches 2 GB. (Maximum data size per a file)</p>
9	122	The description of "Notes" for [6]	<ul style="list-style-type: none"> <li>• The start time and end time can be set <b>in 15 minutes intervals</b>.</li> </ul>	<ul style="list-style-type: none"> <li>• The start time and end time can be set <b>in 1 minute intervals. Duration between the start time and the end time must be more than 15 minutes.</b></li> </ul>

No.	Page	Part to be added or corrected	Description on the Operating Instructions	Correction
10	137	The indication for the error log	-	<b>1DOWN X-Y</b>
	137	The description about the indication " <b>1DOWN X-Y</b> " for error log	-	X indicates the unit/unit number that has the hard disk that has been removed from the subject for recording Y indicates the disk number in the unit/unit number
	137	The cause of the indication " <b>1DOWN X-Y</b> " for the error log	-	One of the disks in the running RAID set failed (It is possible to replace/recover the failed disk.)

### Network Operating Instructions (PDF)

No.	Page	Part to be added or corrected	Description on the Operating Instructions	Correction
1	23	Additional notation to the description of the search filter "TEXT"	-	Audio will not be heard when playing a recording event filtered using the search filter "TEXT".
2	33	Additional notation to the description of "Search for copy data (Copy Data Search)"	-	To stop searching during searching, click the [STOP] button.
3	49	Additional notation to the description about "Copying (Duplicate)"	-	In the following cases, copying currently being performed will be canceled: <ul style="list-style-type: none"> <li>• When the settings are changed during copying</li> <li>• When the user who started the manual copying (currently being performed) using a web browser logged out (closed the web browser)</li> </ul>
4	50	The description of "Step 3" of "Copying (Duplicate)"	It is possible to designate up to 99 minutes and 59 seconds of the time range per download. (Copying will stop automatically when the size of the copied data reaches 4 GB even before the end time of the set time range.)	There is no time range limitation for copying. However, two or more copied data files may be created for a download since copied data will be segmented in the following cases: <ul style="list-style-type: none"> <li>• When 99 minutes and 59 seconds worth of recorded images are copied (Maximum recording per a file)</li> <li>• When a copied data file size reaches 2 GB (Maximum data size per a file)</li> </ul>
5	60	The indication for the error log	-	<b>1DOWN EXT X-Y</b>
	60	The description about the indication " <b>1DOWN X-Y</b> " for the error log	-	X indicates the unit/unit number that has the hard disk that has been removed from the subject for recording Y indicates the disk number in the unit/unit number
	60	The cause of the indication " <b>1DOWN X-Y</b> " for the error log	-	One of the disks in the running RAID set failed (It is possible to replace/recover the failed disk.)
6	75	The indication for "Remove auto links"	-	<b>1DOWN XX</b>

## Network Setup Instructions (PDF)

No.	Page	Part to be added or corrected	Description on the Operating Instructions	Correction
1	37	The description of "Important" for "Auto Copy"	<ul style="list-style-type: none"><li>• Images to be copied automatically will be 30 minute's worth of images recorded from the start of emergency recording/event recording.</li></ul>	There is no time range limitation for copying. However, two or more copied data files may be created for a download since copied data will be segmented when a copied data file size reaches 2 GB. (Maximum data size per a file)
2	70	The additional description to "Note" for step 3	-	<ul style="list-style-type: none"><li>• The start time and end time can be set in 1 minute intervals. Duration between the start time and the end time must be more than 15 minutes.</li></ul>
3	87	The description of "Camera Number Setup" of "Settings for PS-Data"	Click the [✓] button to assign camera numbers (001 - 255) to each camera channel.	Enter camera numbers (001-999) to assign them to each camera channels.
4	111	The indication for "Remove auto links"	-	<b>1DOWN XX</b>

