

O Series Commercial Grade 2
Centerline Latch Entry for Rim Exit Devices



In or Out...we make it Easy!™

Dimensions
1-3/4" x 9"



Features & Benefits

- Unique patented faceplate ramp design accommodates most deadlocking pins, triggers or latches, ensuring security with most rim exit devices with pullman-type latches.
- Accommodates various rim exit device latch projections (from 1/2" to 3/4".)
- The 1-5/8" deep electrical insert* may be horizontally adjusted after final installation to correct door misalignments without altering the original faceplate location.
- AC or DC input acceptable to all models.
- Silver, brown and gold powdercoated finish.
- Special-plated finishes available.
- Fully reversible for left or right-hand doors.

*A minimum frame depth of 1-5/8" for surface-mounted installations and 1-7/8" for semi-mortise installations is required.

0161

Designed especially to operate with rim exit devices. The 0161 has an attractive architectural appearance. It features a hazard-free beveled design with a unique ramp along which the trigger pin glides easily and securely.

Slotted horizontal holes on the 0161 faceplate allow correct alignment with the exit device before final installation. Locking Socket allen-head cap screws prevent loosening and misalignment which can occur with continual door usage.

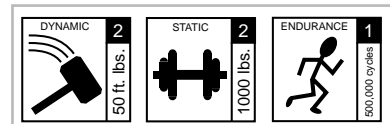
Crossed wires are never a problem as the coil is not polarity-conscious.

Highlights

- UL1034 Burglary-resistant
- Non-handed
- Patented faceplate ramp design
- Extensive Horizontal adjustment
- Locking socket head fasteners
- 3-year limited warranty

Applications

- Commercial Centers
- Industrial Buildings
- Educational Facilities
- Retail Outlets
- Health Care Facilities
- Office Complexes

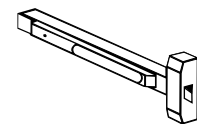


UL
Grade
Level



Hollow Metal Aluminum Wood

Door
Frame
Type



Rim Exit Devices

Door
Lock
Type

Options & Accessories

- MBK60 – Rear mounting plate kit for semi-mortise installations (up to 1/4") or reinforcement for surface applications.
- 0161DDH – Double door housing for pairs of doors
- Special Finishes – Available upon request



In or Out... we make it Easy![™]

NOTE: Not to scale. Specifications are subject to change without notice.

Specifications								
Model	Mode	Code	Voltage	Current	Duty	Sound	Amps	Ohms
0161	Fail Locked	01	11-16V	AC	Intermittent	Buzz	0.50/0.70	16
0161	Fail Locked	05	12V	AC	Intermittent	Buzz	0.15	61
			12V	DC	Continuous	Silent	0.20	61
0161	Fail Locked	08	24V	AC	Intermittent	Buzz	0.07	215
			24V	DC	Continuous	Silent	0.11	215

Fail Locked = Fail Secure = PUL
Fail Unlocked = Fail Safe = PL

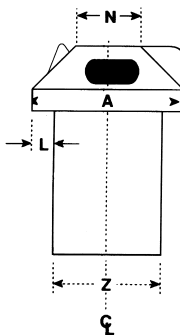
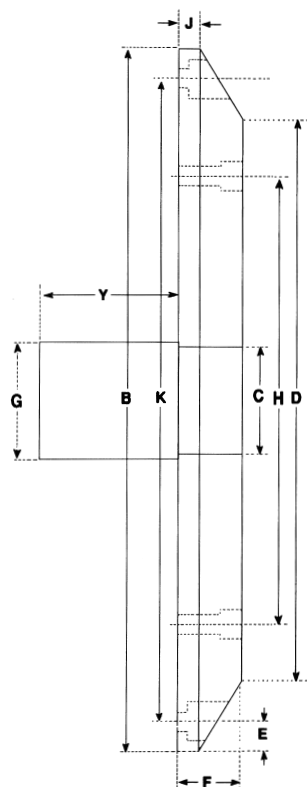
AC = Alternating Current
DC = Direct Current

Intermittent Duty = Energized less than 1 min.
Continuous Duty = Energized 1 min. or more

Duty Ratio 1:5

Certifications/Listings
UL 1034 BURGLARY-RESISTANT, ANSI/BHMA: E09321, NEW YORK CITY MEA: 404-91-M

Profiles														
MEASUREMENT	A	B	C	D	E	F	G	H	J	K	L	N	Y	Z
FRACTIONAL INCHES	1-3/4	9	1-1/2	7-1/4	3/8	3/4	2-3/8	5-1/2	1/4	8-1/4	1/8	3/4	1-5/8	1-5/16
DECIMAL INCHES	1.750	9.000	1.500	7.250	.375	.750	2.375	5.500	.2500	8.250	.125	.750	1.630	1.310
METRIC mm	44.50	228.00	38.10	184.00	9.50	19.05	60.00	139.50	6.35	209.00	3.00	19.05	41.00	33.00



RCI also offers a complete line of Electromagnetic Locks, Electric Locks, Power Supplies, Switches, Keypads & Readers, Exit Devices, Systems, Doors & Hardware.