

NetVision XC 4 - 16 Camera System

- Single product solution for digital video recording
- Storage up to 360 GB
- Up to 120 fps video capture rates
- Non proprietary compression codecs
- Fully integrates into MONITOR ISM Director V4.0
- Rack mount unit, 4 to 16 cameras
- Reliable, easy to use MS Windows 2000 based system
- Fully addressable by LAN/WAN/dial-up and TCP/IP



NetVision™ is a remote digital video surveillance capture and reporting system accessible by LAN/WAN/Dial up and Internet.

Capture Station

The NetVision™ Capture Station is a pre-configured, ready to use Digital Surveillance Recorder that is similar to a digital VCR with enhanced functionality. Recording can be either continuous or event driven. Recording events can be triggered via motion, scheduling or input points.

Remote Surveillance Station

The NetVision™ Surveillance Station allows you to remotely configure the capture station, manage and download video clips using any PC with access to the capture station from anywhere in the world by the provided surveillance station software.

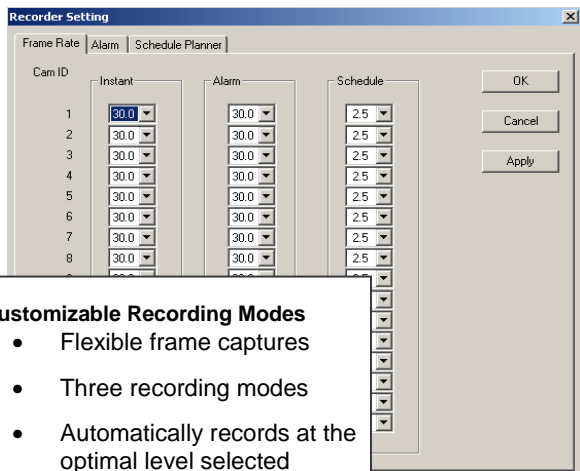


Surveillance Station features			
Multiple motion alarms zones (up to 192 per camera)	Yes	Search video by location, time & date	Yes
External alarm triggers (up to 16)	Yes	Audio Monitoring (with high speed connection)	Yes
Simultaneous video from multiple sites	Yes	Remote preview of event video	Yes
Alarms notification (dial out on alarm)	Yes	Resizable video windows	Yes
Video motion alarm schedule	Yes	PTZ controls (local and remote)	Yes
Remote configuration of capture station	Yes	Change motion detection settings	Yes
Download event video	Yes	Still image download	Yes
Audit activity on remote sites	Yes	Video/Guard tours	Yes
Digital zoom	Yes	Control of image properties	Yes
Live color video	Yes	Pre-alarm recording	Yes

ISO 9002-94



Cert # 000879



Customizable Recording Modes

- Flexible frame captures
- Three recording modes
- Automatically records at the optimal level selected

- Security Features**
- ▼ Password protected login and trail auditing
 - ▼ Definable operator authority levels
 - ▼ Time and Date Embossing
 - ▼ Software to software communication
- Advanced Features**
- ▼ Bandwidth throttling
 - ▼ Video processing speed distribution from idle to active cameras
 - ▼ Software and hardware watchdogs ensure optimal uptime
 - ▼ Watermarking

* add language symbol: E= English, F=French, D=Dutch

Archive Duration*

	40 GB	120 GB	240 GB	360 GB
XC1 4 cameras	16 days	40 days	80 days	120 days
XC2 8 cameras	8 days	20 days	40 days	60 days
XC3 12 cameras	5 days	13 days	26 days	40 days
XC4 16 cameras	4 days	10 days	20 days	30 days

*Continuous recording at 1 frame per second at high resolution, 15% frame-to-frame movement, key frame rate of 9

Specifications NetVision™ XC

- 4 to 16 terminated camera inputs
- 4U Industrial rack mount enclosure (mountable horizontally or vertically)
- 483mm x 178mm x 510mm (19" x 7" x 20.08")
- Records Video Events
- Video Motion Detection Schedules
- Video Motion Detection (192 detection frames) per camera
- Pre and post video capture
- Digital Video Storage 40 GB standard, Optional; 120 GB, 240 GB or 360 GB
- Camera Support: NTSC & PAL
- Remote PTZ/Iris/Focus Control available
- Black & white, colour cameras supported
- Options:
- 16 Input points for external video triggering

Making security easier for you

	Product Descriptions
120-5160	VEREX NetVision X1 card
120-5161*+	VEREX NetVision XC Capture Station - XC1 package (4 cameras)
120-5162*+	VEREX NetVision XC Capture Station - XC2 package (4 or 8 cameras)
120-5163*+	VEREX NetVision XC Capture Station - XC3 package (4, 8 or 12 cameras)
120-5164*+	VEREX NetVision XC Capture Station - XC4 package (4, 8 12 or 16 cameras)
120-5165*+	VEREX NetVision XC Software Only
120-5175	VEREX NetVision XC/XS 4 input/3 output point input cable
120-5176	VEREX NetVision XC/XS 8 input/3 output point input cable
120-5177	VEREX NetVision XC/XS 16 input/3 output point input cable
120-5126	VEREX NetVision XC/XS RS422 Converter for PTZ Control
120-5146	VEREX NetVision Keyboard
120-5147	VEREX NetVision Mouse
120-5250	VEREX NetVision XC 120GB Hard Drive Option
120-5251	VEREX NetVision XC 240GB Hard Drive Option
120-5252	VEREX NetVision XC 360GB Hard Drive Option
120-5153	VEREX NetVision XC Analog Video Output Card
120-5151	VEREX NetVision XC/XS 1 to 4 Video Loopback Amplifier
120-5152	VEREX NetVision XC/XS 16 to 64 Video Loopback Amplifier

VEREX Technology, a division of CSG Security, is constantly working to improve products and reserves the right to alter equipment designs and specifications without notice or obligation.

© 2002 CSG Security Inc. / Sécurité CSG Inc.
5201 Explorer Drive, Mississauga, Ontario, L4W 4H1 Canada

Toll-free (USA & Canada): 1 877.249.9993
Phone: +1 905.206.8434
Fax: +1 905.629.4970

www.verextech.com sales@verextech.com

Rev July, 2002